

## M191 SERIES

AC/DC POWER SUPPLY



### PRODUCT HIGHLIGHTS

- MINIATURE
- HIGH DENSITY
- FIVE OUTPUTS
- 3-PHASE AC/DC CONVERTER
- UP TO 300W



**Applications**

Military, Airborne, Mobile, Ruggedized, Telecom, Industrial Power Supply

**Special Features**

- Miniature size
- High efficiency
- Wide input range
- Input / Output isolation
- Output groups float from each other
- Fixed switching frequency
- EMI filters included
- Remote inhibit (TTL Level, Floating)
- Turn-on sequencing (option)
- BIT signal indicates outputs' status
- Limited inrush current
- Non-latching protections:
  - Overload / short-circuit
  - Over Temperature

**Environmental Conditions**

Meets or exceeds MIL-STD-810D

- Temperature:
  - Operating: -55 °C to +85 °C
  - (Colling surface) Storage: -55 °C to +85 °C
- Random Vibration IAW MIL-STD-810D Method 514.3, Procedure I, Category 7B Fig. D

Frequency [Hz]	PSD [g <sup>2</sup> /Hz]	Remarks
15 to 120	0.04	
120 to 300	Rise to 0.04	4dB/oct
300 to 1000	0.14	
1000 to 200	Decrease by 6dB/oct	

**Reliability**

100,000 hours, calculated per MIL-STD-217F Notice 2 at +85 °C (Colling surface), Ground Fixed.

**Electrical Specifications**

**INPUT**

AC version input voltage range:

Steady-state: 103 to 127 V<sub>rms,l-n</sub>, 400 Hz, 3-Phase  
 Transients: 80 V<sub>rms</sub> / 100 ms;  
 180 V<sub>rms</sub> / 100 ms

DC version input voltage range:

Steady-state: 220 to 350 V<sub>DC</sub>  
 Transients: 160 V<sub>DC</sub> / 100 ms;  
 440 V<sub>DC</sub> / 100 ms Efficiency:

up to 82%

EMC: Designed to meet\*

MIL-STD-461F CE102, CS101, CS114, CS115, RS102, RS103

Isolation:

Input to Output: > 10 MΩ @ 500 V<sub>DC</sub>  
 Input to Chassis: > 10 MΩ @ 500 V<sub>DC</sub>

**DC OUTPUTS (All floating from each other)**

Output voltage regulation:

Less than ±3% (0 to full load, -55 °C to +85 °C)

Ripple and Noise: 50 mV<sub>p-p</sub>,

typical (max. 1% of typical output voltage)

Current limiting:

Continuous protection for unlimited time Over-

Voltage Protection:

Passive transorbs on outputs.

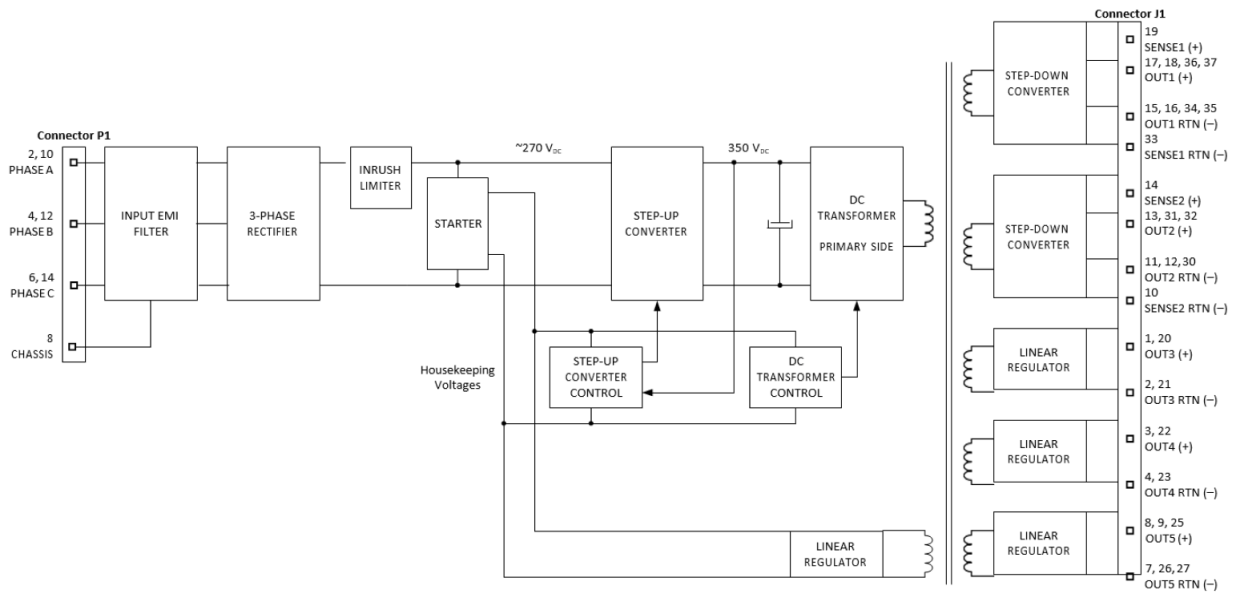
Isolation:

Output to Chassis: > 1 MΩ @ 100 V<sub>DC</sub>

---

\* Compliance achieved with shielded cables.

**Operational Block Diagram**



**Outputs Range**

Output #	Voltage Range	Current Range	Power Range
1	3.3 to 12 V <sub>DC</sub>	0 to 15 A	0 to 135 W
2	3.3 to 12 V <sub>DC</sub>	0 to 10 A	0 to 50 W
3	3.3 to 24 V <sub>DC</sub>	0 to 4 A	0 to 60 W
4	3.3 to 24 V <sub>DC</sub>	0 to 4 A	0 to 60 W
5	3.3 to 28 V <sub>DC</sub>	0 to 9 A	0 to 230 W
<b>Total</b>			0 to 300 W

**Pin Assignment**

**Input Connector (P1)**

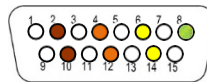
Connector type: M24308/24-38F or eq.

Mating connector type: M24308/2-2F or eq.

Pin No.	Function	
1	N.C.	
2	Phase A	●
3	N.C.	
4	Phase B	●
5	N.C.	

Pin No.	Function	
6	Phase C	●
7	N.C.	
8	Chassis	●
9	N.C.	
10	Phase A	●

Pin No.	Function	
11	N.C.	
12	Phase B	●
13	N.C.	
14	Phase C	●
15	N.C.	



**Output Connector (J1)**

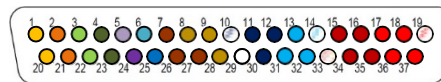
Connector type: M24308/23-40F or eq.

Mating connector type: M24308/4-4F or eq.

Pin No.	Function		P
1	OUT 3	●	+
2	OUT 3 RTN	●	-
3	OUT 4	●	+
4	OUT 4 RTN	●	-
5	BIT	●	+
6	INHIBIT	●	+
7	OUT 5 RTN	●	-
8	OUT 5	●	+
9	OUT 5	●	+
10	SENSE 2 RTN	○	-
11	OUT 2 RTN	●	-
12	OUT 2 RTN	●	-
13	OUT 2	●	+

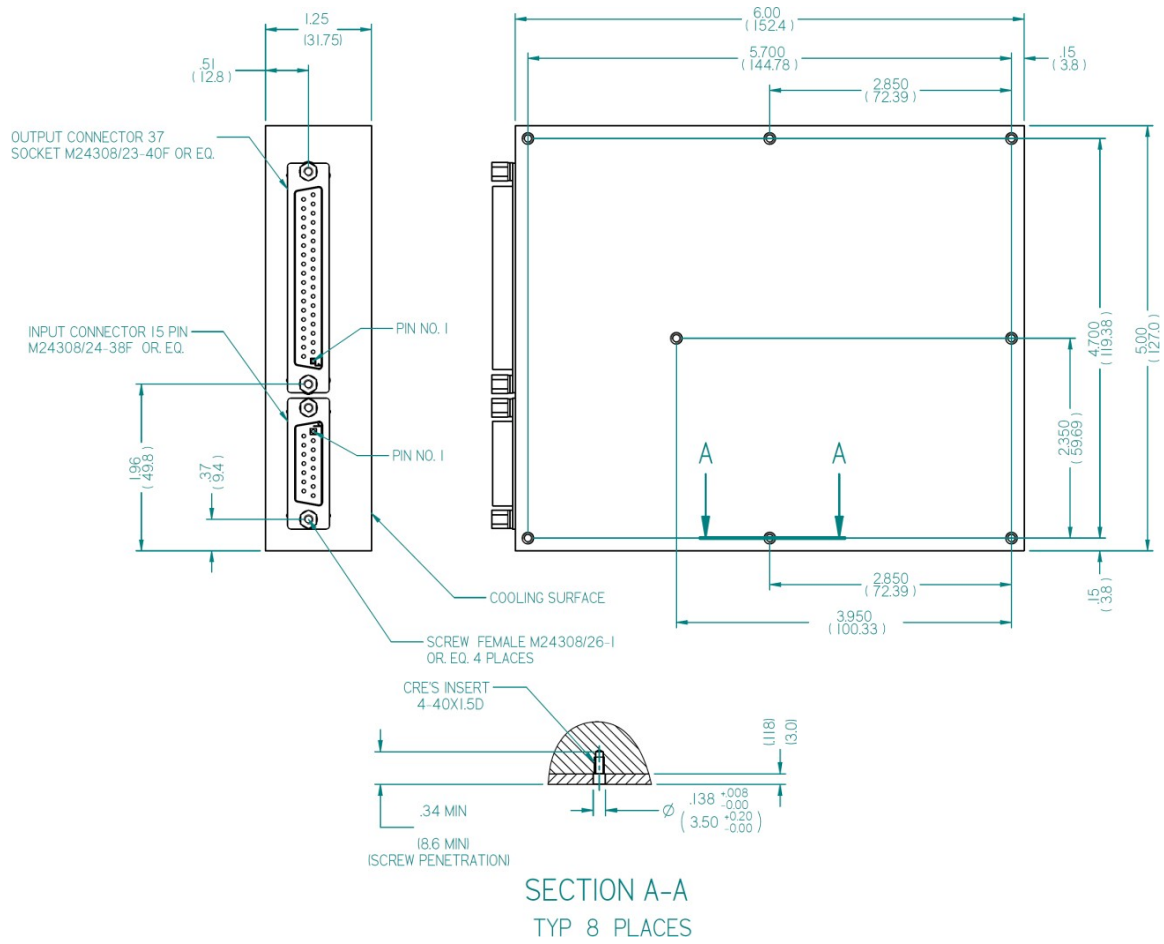
Pin No.	Function		P
14	SENSE 2	○	+
15	OUT 1 RTN	●	-
16	OUT 1 RTN	●	-
17	OUT 1	●	+
18	OUT 1	●	+
19	SENSE 1	○	+
20	OUT 3	●	+
21	OUT 3 RTN	●	-
22	OUT 4	●	+
23	OUT 4 RTN	●	-
24	BIT RTN	●	-
25	INHIBIT RTN	●	-
26	OUT 5 RTN	●	-

Pin No.	Function		P
27	OUT 5 RTN	●	-
28	OUT 5	●	+
29	N/C		
30	OUT 2 RTN	●	-
31	OUT 2	●	+
32	OUT 2	●	+
33	SENSE 1 RTN	○	-
34	OUT 1 RTN	●	-
35	OUT 1 RTN	●	-
36	OUT 1	●	+
37	OUT 1	●	+



**Note:** All pins with identical function and/or designation should be connected together for best performance.

**Outline Drawing**



**Notes**

1. Dimensions are in inches (mm)
2. Tolerance is:  
.XX ±.02 in.  
.XXX ±.01 in.
3. Weight: Approx. 4.4 lbs (2 kg)

**Note: Specifications are subject to change without prior notice by the manufacturer**